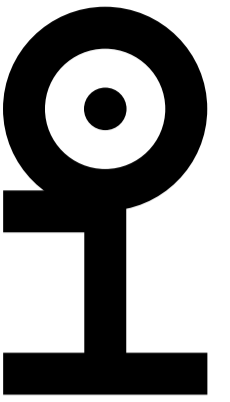




imperfetto^{lab}



La collezione Imperfettolab si snoda in una timeline senza date, rivendica la sua solida identità indefinita, parla con un alfabeto di forme archetipo quali tronchi, ciottoli, bolle, gusci, cavità, sfere, bulbi o rocce. La materia padroneggiata con abilità e sapienza – acquisite in più di vent’anni – è in primis la vetroresina.

Elementi d’arredo – tavoli, panche, librerie, pouf, lounge-chair, lampade e oggettistica – che raramente possiedono la dote della “gradevolezza” nel senso banale del termine.

Prive di ipocrisia, hanno l’etica testarda del bianco o nero, al massimo viene loro concesso qualche brillio metallico o un rivestimento scelto negli archivi di vecchie telerie. Curvilinee e sinuose, obbediscono tutte al gigantismo, provocando sempre una reazione emotiva.

Nel processo del fare, l’intuizione originaria viene modellata o scolpita in scala reale da una mano sapiente, dando vita a una matrice che poi, attraverso uno stampo, trasferisce ai propri multipli i caratteri di forma e sostanza. Nella sequenza della lavorazione la finitura attenta, minuziosa e realizzata a mano, differente per ogni genere di oggetto, permette a tutti gli elementi di acquisire identità e unicità.

La dimensione di Imperfettolab, grazie alla simbiosi più che ventennale tra l’artista designer scultore Verter Turrone, e il suo alter ego complementare Emanuela Ravelli, sembra voglia raccontare, con la dolcezza e la bellezza della contraddizione dell’arte, la battaglia tra “natura” e “technè”, tra naturale e artificiale, senza che abbia alcuna importanza chi sia il vincitore. La risultante sono oggetti destinati a durare nel tempo, nella materia e nell’identità.

Imperfettolab’s collection unfolds in a dateless timeline, it claims its solid undefined identity, speaks with an alphabet of archetypal forms such as trunks, pebbles, bubbles, shells, cavities, spheres, bulbs or rocks. The material mastered with skill and wisdom, acquired in more than twenty years, is mainly fibreglass.

Furnishings – tables, benches, bookcases, poufs, lounge chairs, lamps and accessories – that rarely possess the gift of “pleasantness” in the banal sense of the term.

Without hypocrisy, they have the stubborn ethics of white or black, they are at most granted a metallic shimmer or upholstery chosen in the archives of old textiles. Curvilinear and sinuous, they all obey gigantism, always causing an emotional reaction.

In the process of making, the original intuition is modelled or sculpted in full-scale by skilful hands, giving life to a matrix that then, through a mould, transfers to its multiples the characters of form and substance. In the manufacturing sequence the finish, careful and meticulous and handmade, different for each kind of object, allows all elements to acquire identity and uniqueness.

The dimension of Imperfettolab, thanks to over twenty years of symbiosis between the artist designer sculptor Verter Turrone and his complementary alter ego Emanuela Ravelli, seems to want to describe, with the sweetness and beauty of the contradiction of art, the battle between “nature” and “technè”, between natural and artificial, without it mattering who the winner is. The result is objects which are intended to last in time, material and identity.



LIMITED EDITION
★ LIMITED EDITION ★
LIMITED EDITION

bioma

seduta in vetroresina, base in metallo
armchair in fibreglass, metal base

design verter turrone **new 2019**



bioma

seduta in vetroresina, base in metallo
armchair in fibreglass, metal base
design verter turrioni 2016



bioma

seduta in vetroresina, base in metallo
armchair in fibreglass, metal base
design verter turrioni **new 2019**



pùka

seduta in vetroresina, base in metallo
armchair in fibreglass, metal base

design verter turrone **new 2019**



pùka

seduta in vetroresina, base in metallo
armchair in fibreglass, metal base
design verter turrone **new 2019**





antipode

tavolo in vetroresina
table in fibreglass

design verter turrone **new 2019**



arenaria

seduta-tavolo / elemento scultoreo in vetroresina
seat-table / sculptural element in fibreglass
design Verter Turrone 2014



olivia

seduta in vetroresina, base in metallo
seat in fibreglass, metal base
design verter turrone 2018





plateau

tavolo in vetroresina
table in fibreglass

design verter turrone 2018

olivia

seduta in vetroresina, base in metallo
seat in fibreglass, metal base

design verter turrone 2018



plateau

tavolo in vetroresina
table in fibreglass
design verter turrone 2018



epoché

seduta con scocca in vetroresina, cuscino rivestito in pelle o sky
armchair in fibreglass, upholstered cushion in leather or leatherette
design verter turrone 2013



LIMITED EDITION
★ LIMITED EDITION ★
LIMITED EDITION

epoché

seduta con scocca in vetroresina, cuscino rivestito in tessuto vintage
armchair in fibreglass, upholstered cushion in vintage fabric
design verter turrone 2013



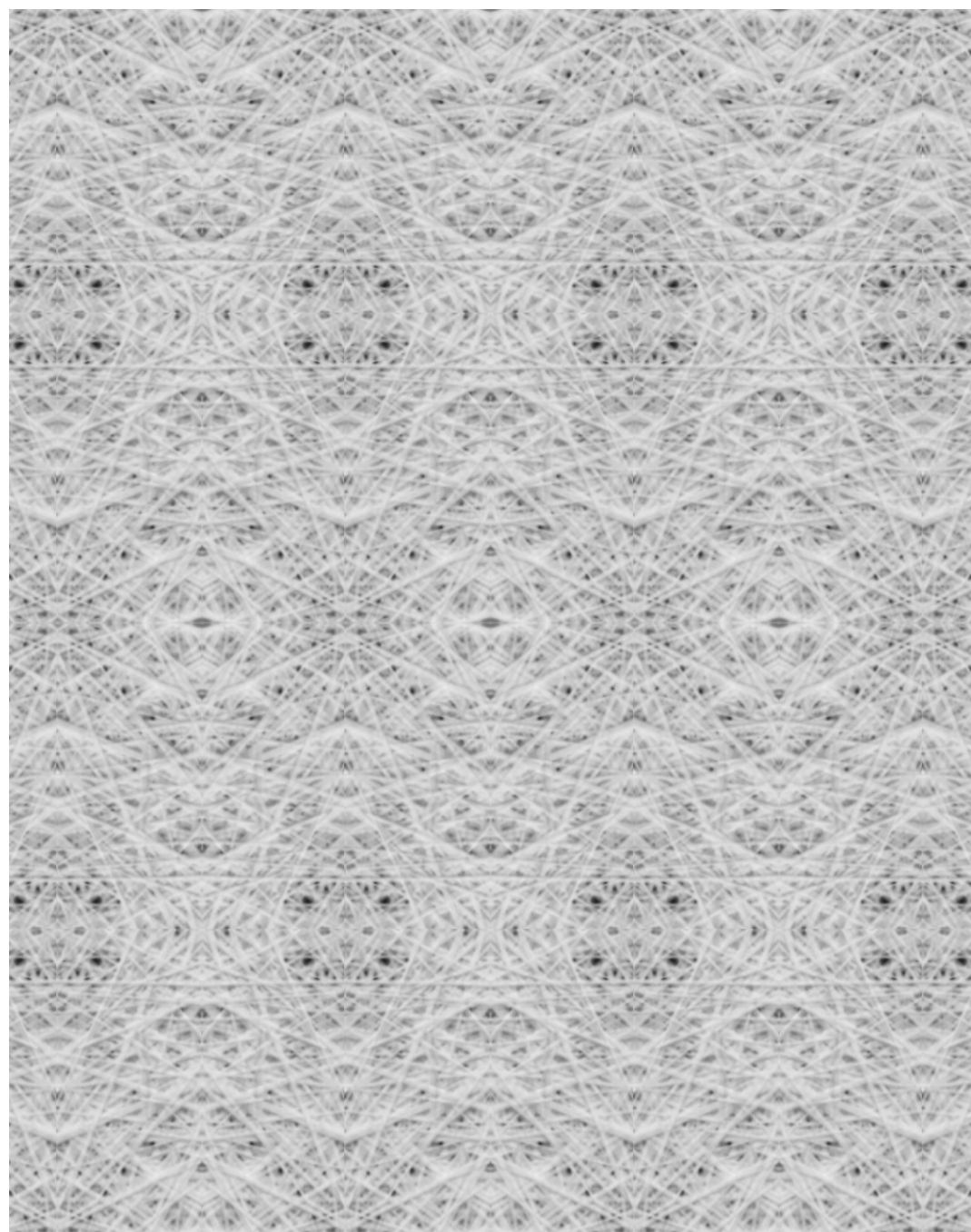
mercurio

seduta in vetroresina
seat in fibreglass
design imperfettolab 2003



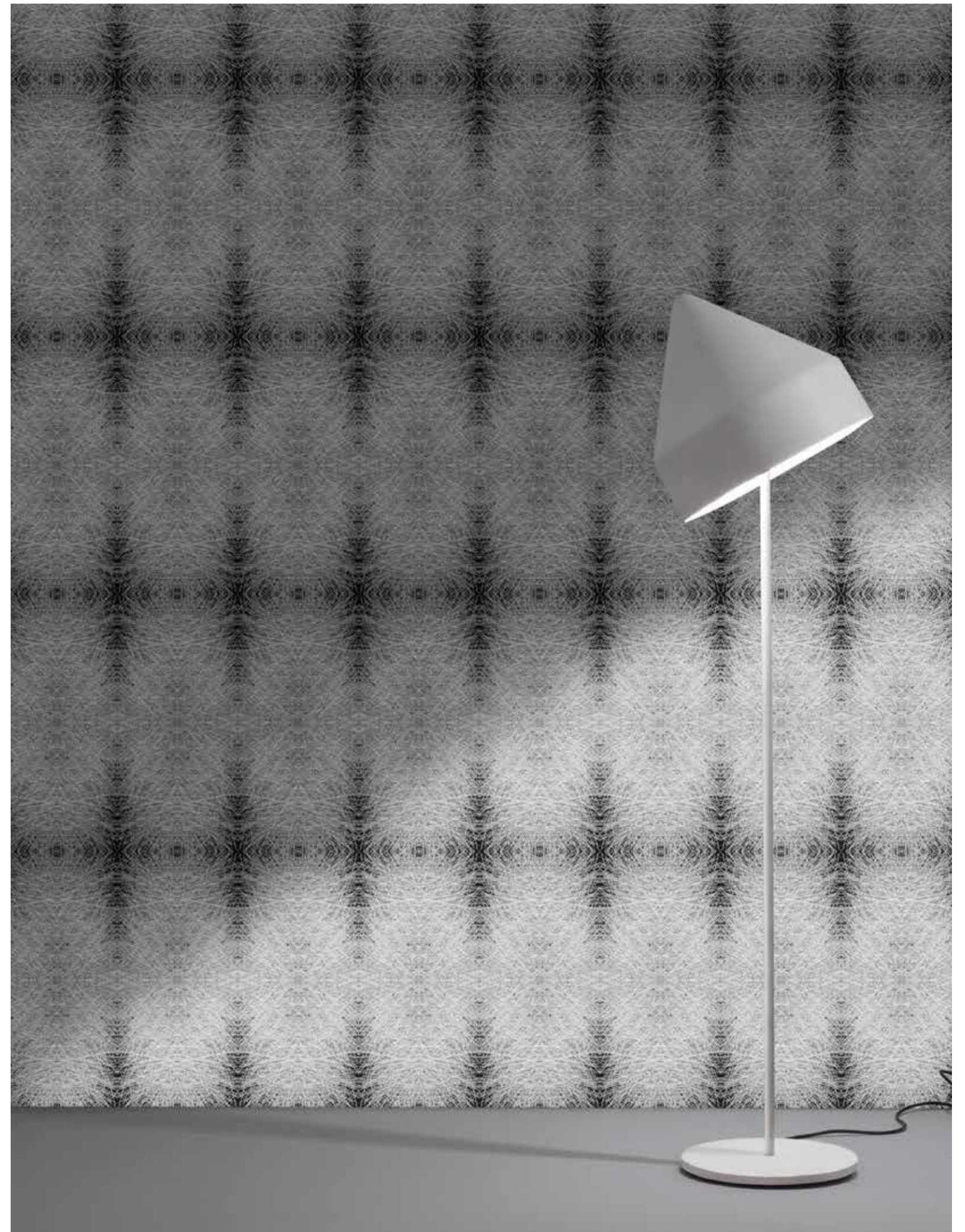
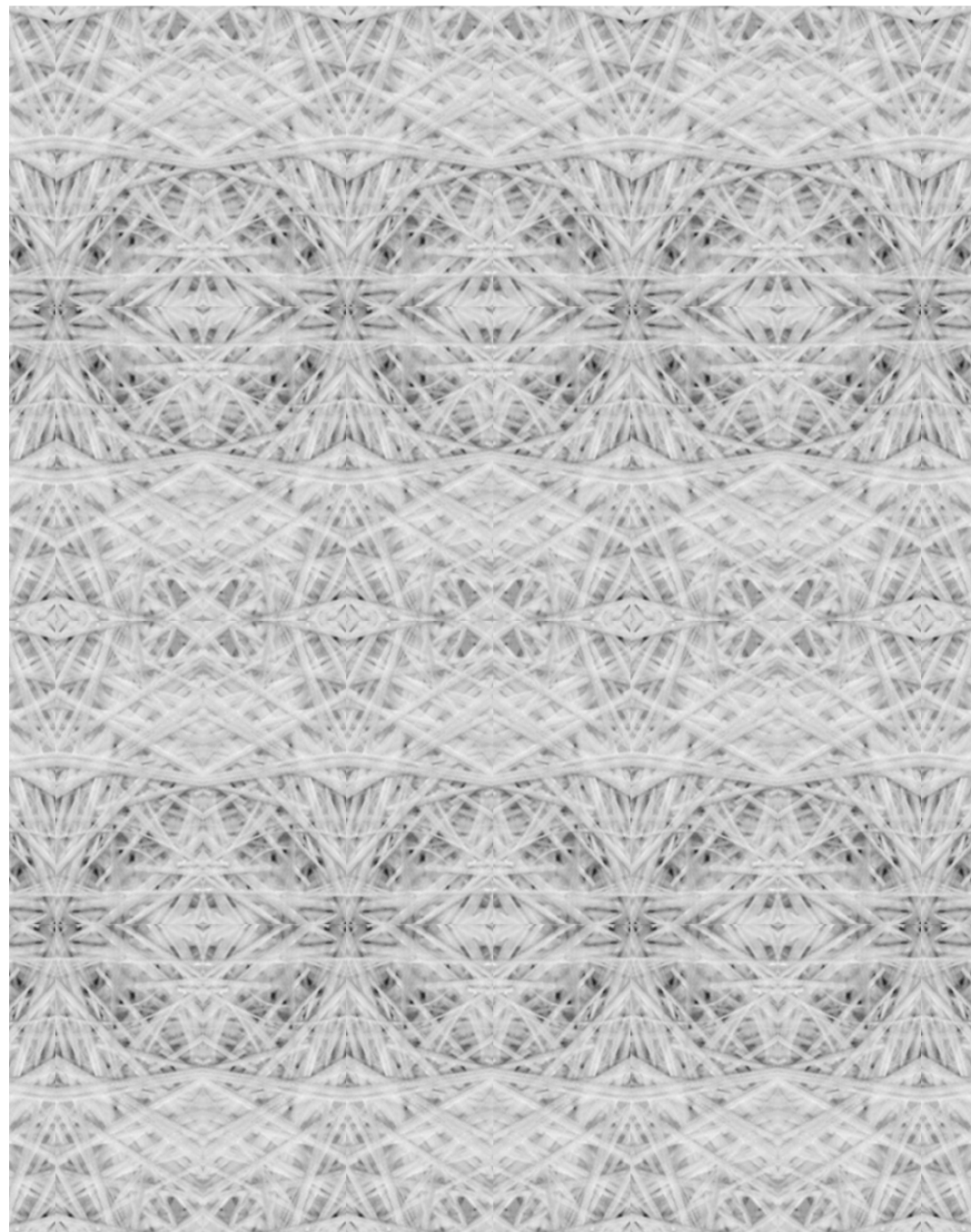
descartes .3

carta da parati
wallpaper
design stefano tonti
2018



descartes .2

carta da parati
wallpaper
design stefano tonti
2018

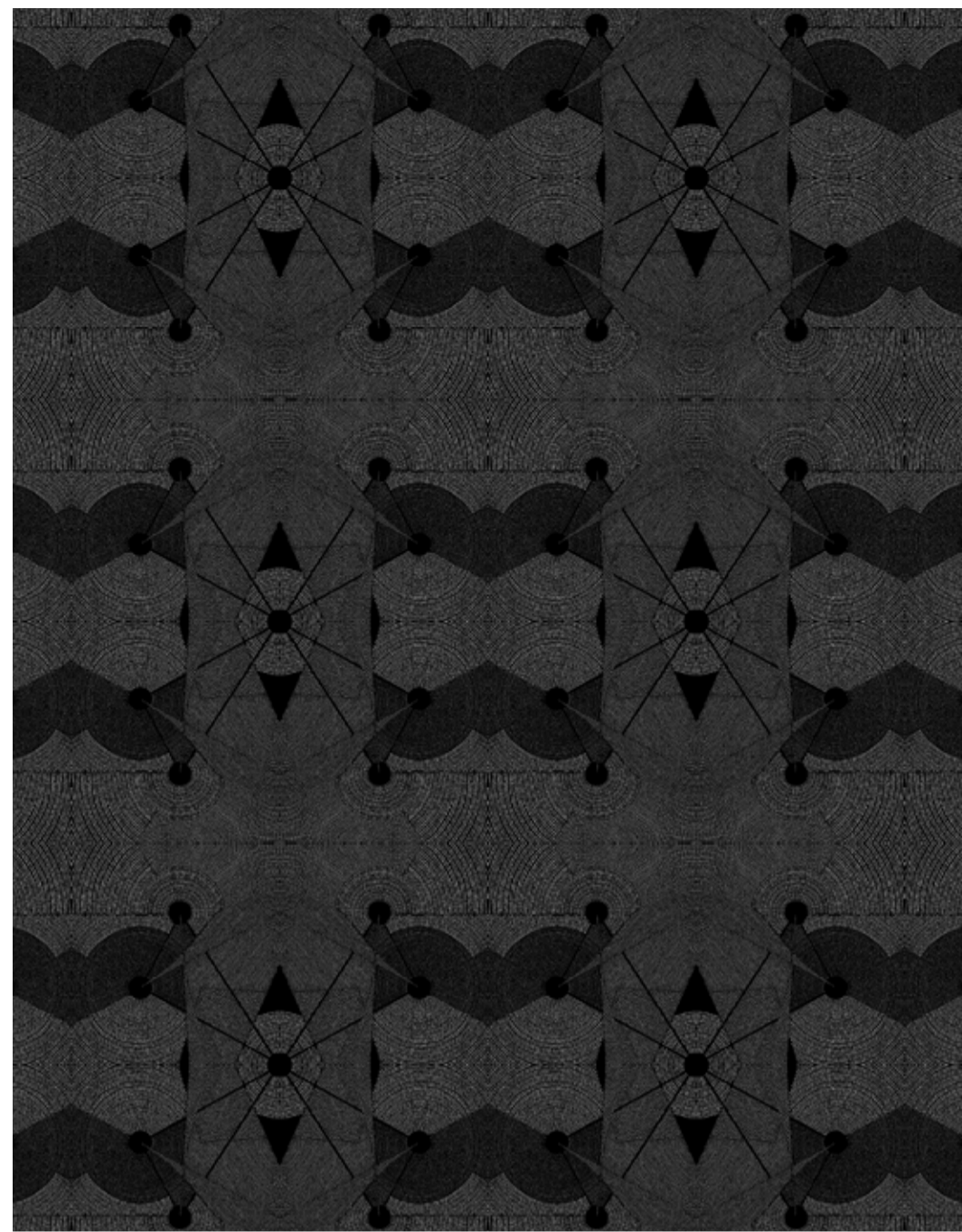


descartes .1

carta da parati
wallpaper
design stefano tonti 2018

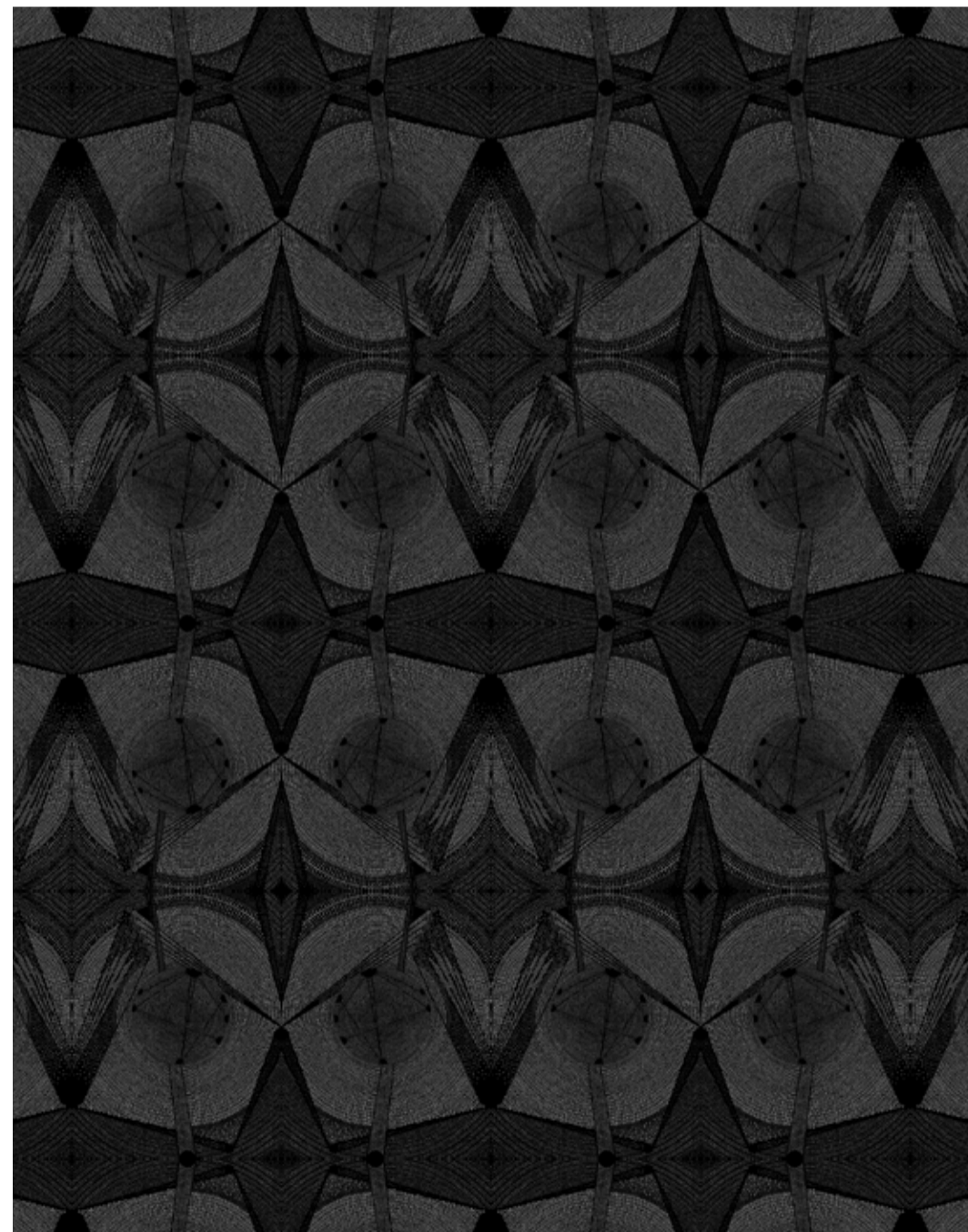
ludmilla

lampada da terra
floor lamp
design verter turrone 2015



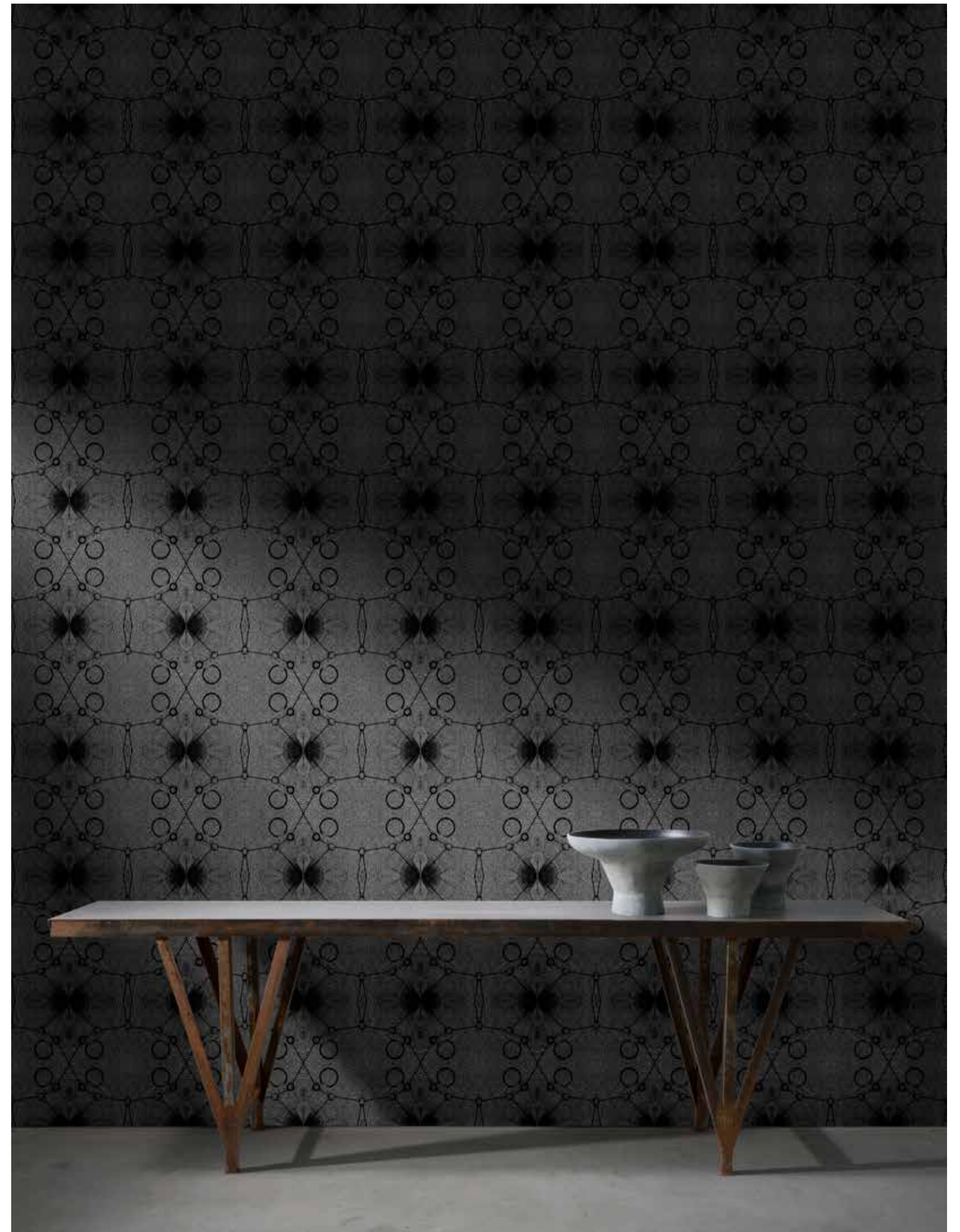
kehre_7

carta da parati
wallpaper
design mirco tarsi
new 2019



kehre_4

carta da parati
wallpaper
design mirco tarsi
new 2019



kehre_1

carta da parati
wallpaper
design mirco tarsi new 2019

sólo

consolle in metallo, piano in vetroresina
console in metal, top in fibreglass
design verter turrioni new 2019

unda

vaso in vetroresina
vase in fibreglass
design verter turrioni new 2019



nido

seduta in vetroresina, base in metallo
armchair in fibreglass, metal base
design verter turrioni 2008



mirroe

specchio scultoreo
sculptural mirror
design verter turrioni 2012

LIMITED EDITION
★ LIMITED EDITION ★
LIMITED EDITION



basalto

tavolino in vetroresina e metallo
coffee table in fibreglass and metal
design verter turrone **new 2019**



chris

seduta con scocca in vetroresina, cuscino rivestito in tessuto o pelle, base in metallo
chair in fibreglass, upholstered cushion in fabric or leather, metal base
design imperfetolab 2012



miss

tavolino in vetroresina
coffee table in fibreglass
 design verter turrone 2015



lapsus

tavolino in vetroresina
coffee table in fibreglass
 design verter turrone 2015



lei

lampada a sospensione in vetroresina
suspension lamp in fibreglass
 design imperfetolab 2017

miss

tavolino in vetroresina
coffee table in fibreglass
 design verter turrone 2015



canoa

panca in vetroresina, seduta imbottita rivestita in sky, struttura in acciaio
bench in fibreglass, upholstered seat in leatherette, stainless steel base
design imperfettolab 2003



LIMITED EDITION
★ LIMITED EDITION ★
LIMITED EDITION

olmo

panca in vetroresina
bench in fibreglass
design verter turrioni 2015





ciottolo #1

seduta in vetroresina
seat in fibreglass

design imperfettolab 2017



ciottolo

seduta in vetroresina
seat in fibreglass
design verter turroni 1999



ombra

seduta con scocca in vetroresina rivestita in sky, base in metallo
armchair in fibreglass upholstered in leatherette, metal base
 design verter turrone 2016



uno

elemento scultoreo
sculptural element
 design verter turrone 2006

isola #1

tavolino in vetroresina
coffee table in fibreglass
 design verter turrone 2016

ombra

seduta con scocca in vetroresina, base in metallo
armchair in fibreglass, metal base
 design verter turrone 2016

imperfetto^{lab}

via luciano lama 32/34
47020 longiano (fc) italy
tel (+39) 0547.57167
mobile (+39) 348.4303853

info@imperfettolab.com
www.imperfettolab.com
#imperfettolab

catalogo a cura di
catalogue by
verter turrone
emanuela ravelli

grafica
graphic design
stefano tonti

fotografie
photos
domenico resmini
saverio femia pagg. 16-17
ezio manciucca pag. 41

testo a cura di
text by
roberta eusebio
press office

traduzioni
translations
ester bendandi

opere in catalogo
works in catalogue
verter turrone pag. 29

stampato nell'aprile 2019
printed in april 2019

© 2019 imperfettolab



etti

lampada in vetroresina
lamp in fibreglass
design verter turrone 2015

