

VOLKER HAUG

Studio Collection

Contents

Studio Profile	03
Pyramid Scheme	09
Oddments	15
Anton	21
U Chain	31
Discus	33
Step & Kick	36
Contact	46

Studio Profile

Volker Haug Studio is a Melbourne-based design practice focussed on decorative lighting.

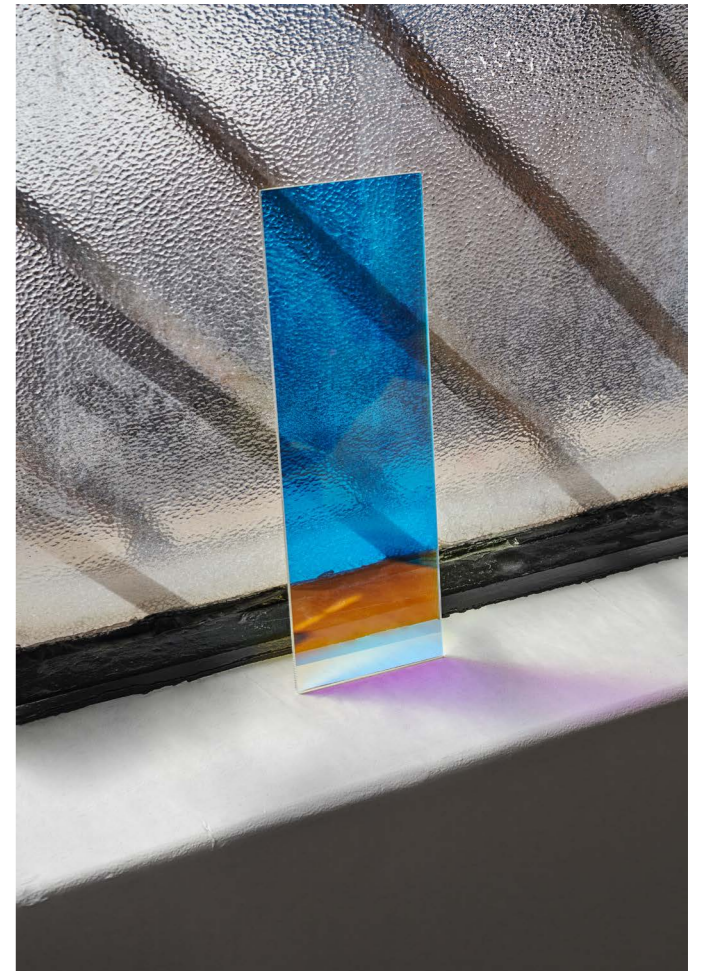
The Studio's production and assembly teams occupy the ground floor of a 1940s warehouse, while a design office and showroom are located above. This allows the design and workshop teams to work together on different architectural contexts, and to combine their expertise across a range of small-to-large scale architectural projects.

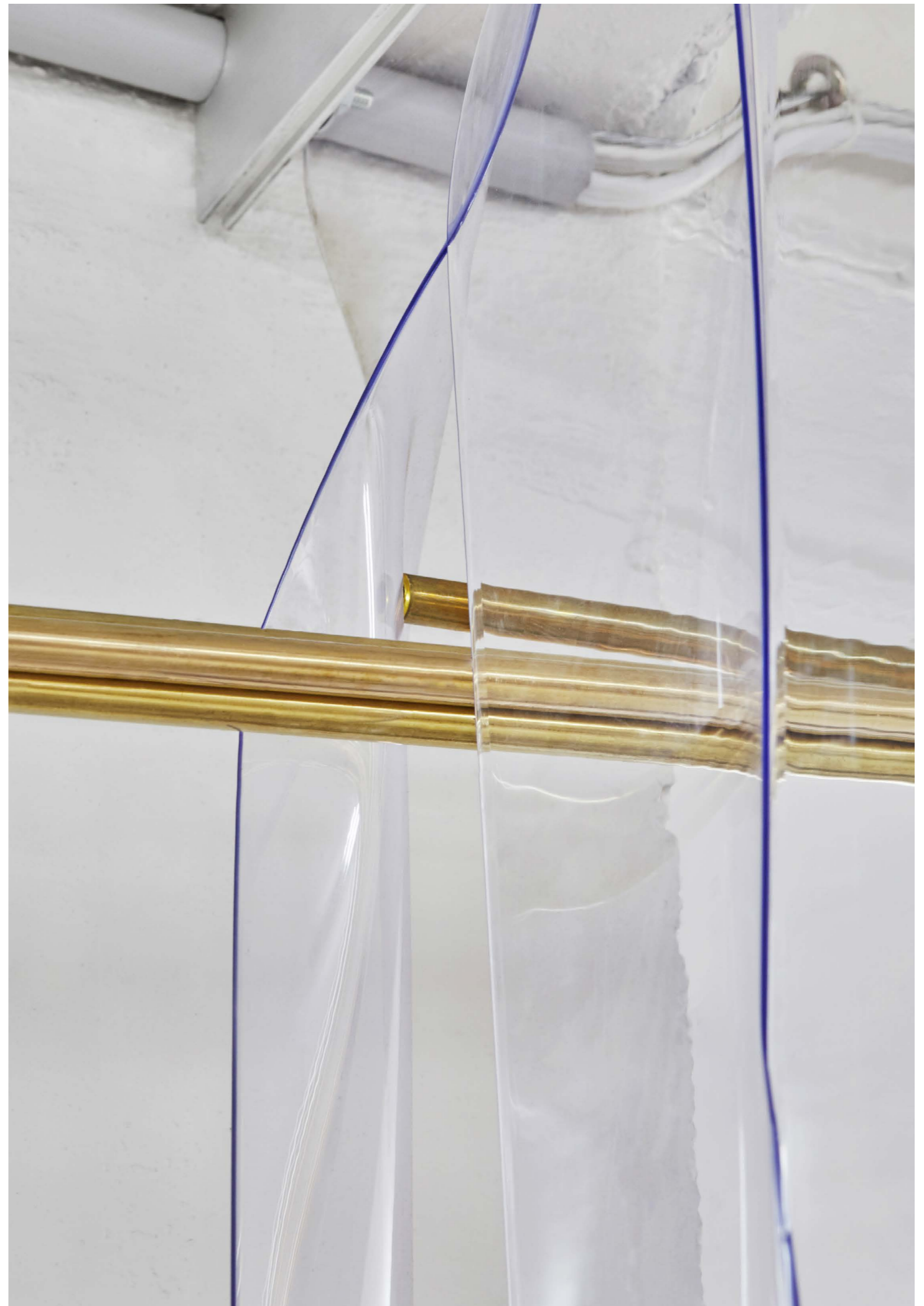
Over a decade's worth of designs have shaped the Studio's aesthetic. The eclectic and experimental nature of earlier works have evolved, becoming more detail driven, with recent ranges championing a refined-yet-playful look. Throughout the years of operation, the Volker Haug Studio signature of placing the lamp at the forefront of the design process remains a constant element in the composition.









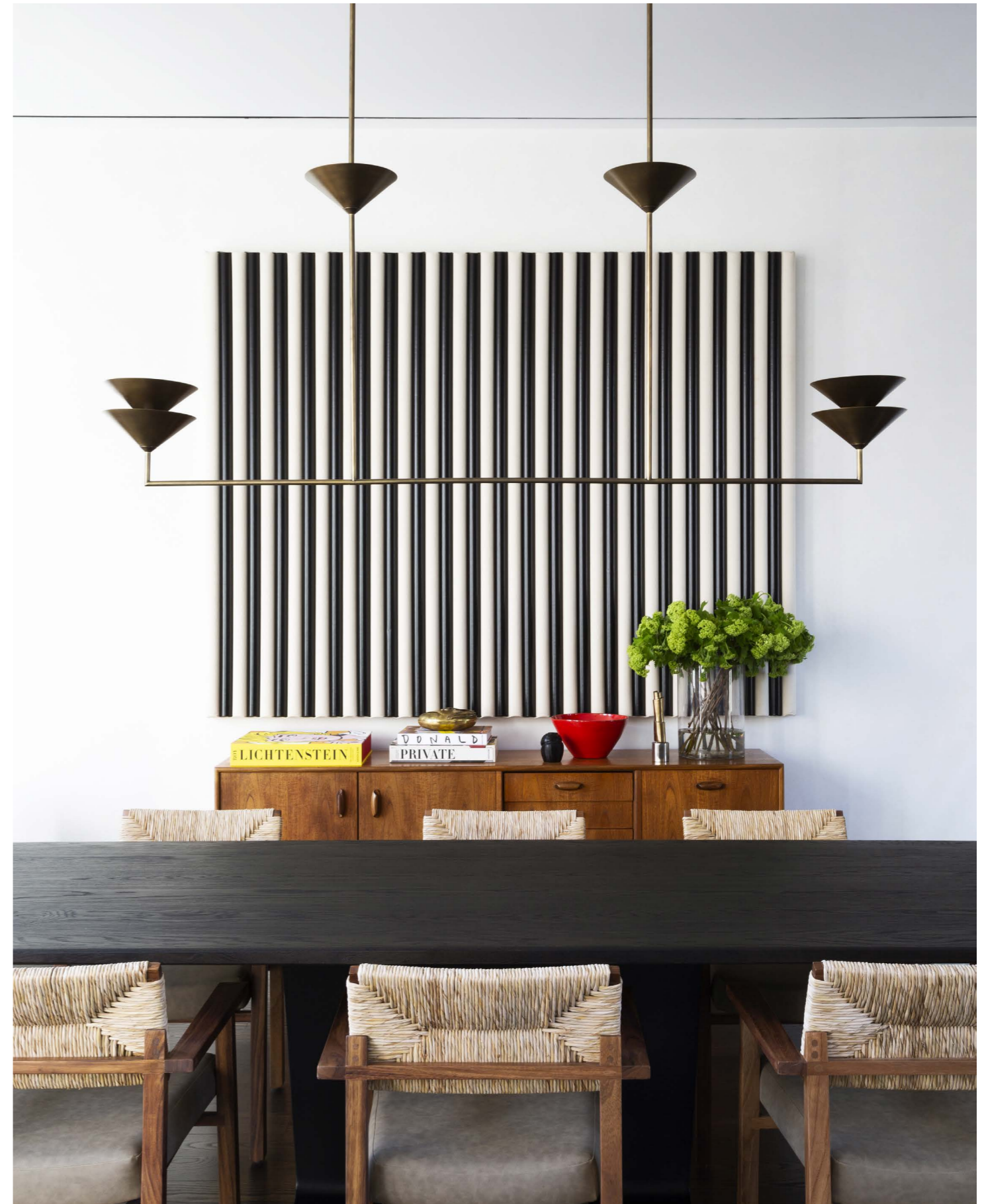


The Pyramid Scheme features tiered conical forms, punched vertically by a linear framework in a pragmatic take on spatial ornamentation.





Balanced Stack
Samuel Amoia
SoHo Apartment
Photography by Nina Poon



Balanced Stack
Samuel Amoia
SoHo Apartment
Photography by Nina Poon



Baby Drop
Lexus Design Pavillion 2019
Styling by The Big Group
Photography by Marcel Aucar



Baby Wall Swing
Lexus Design Pavillion 2019
Styling by The Big Group
Photography by Marcel Aucar



Wall Stack 3
Lexus Design Pavillion 2019
Styling by The Big Group
Photography by Marcel Aucar

Oddments is an expandable system of arcs, available in a range of sizes that can outwardly expand across the horizontal plane, ascend vertically or interact playfully.

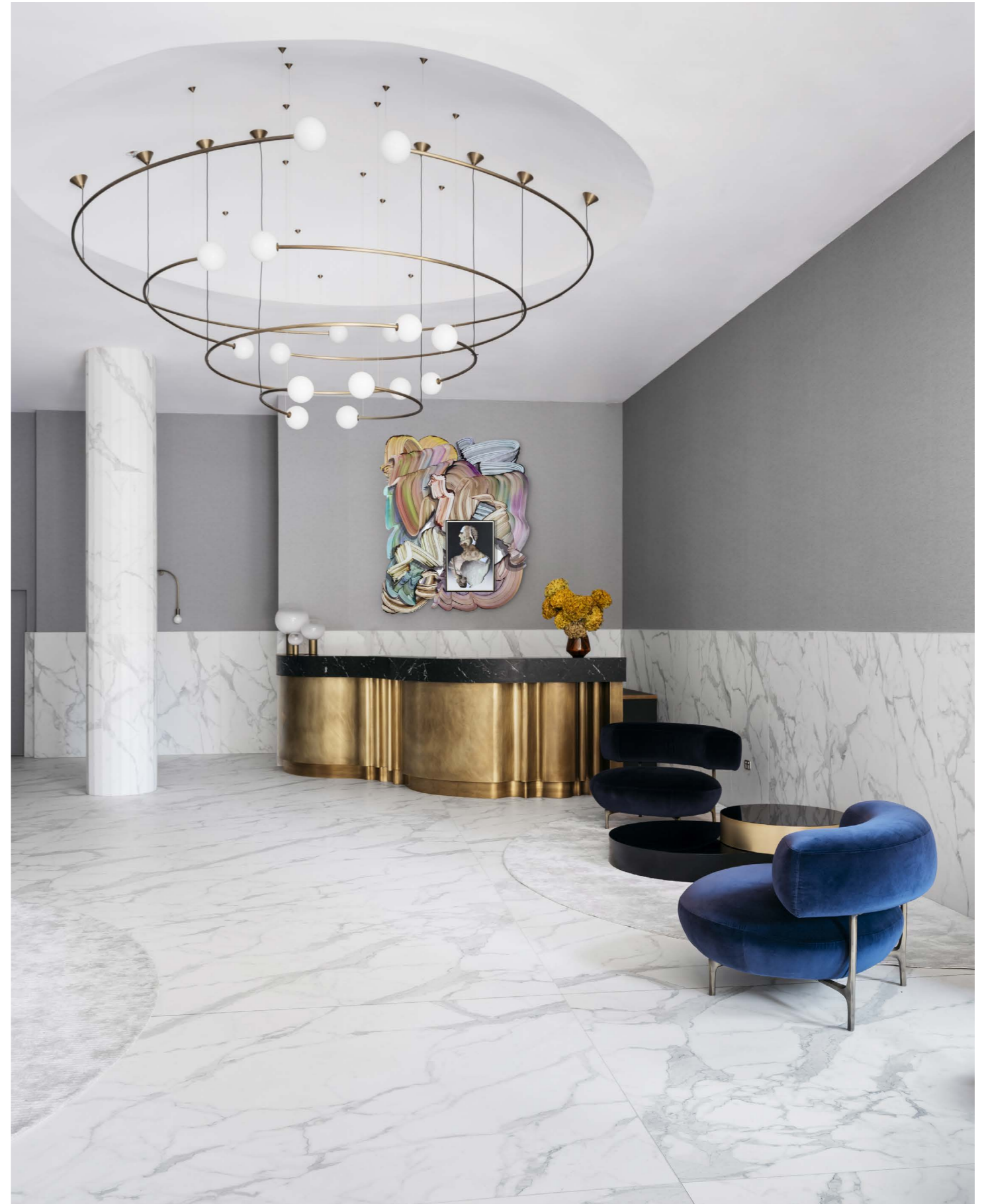




Oddments Single Ring ø1600
Clever Colour Design
Carmel's Penthouse
Photography by Tom Ross



Oddments Dual Ring
Matt Woods
Percy Plunkett
Photography by Dave Wheeler



Oddments Custom Installation
Nina Maya
The Oscar
Photography by Felix Forest



Oddments Single Arc
Danielle Brustman
Rigg Design Prize 2018
Photography by Emma-Jane Johnston



Oddball Custom Wall Light
Matt Woods
Perfect Storm
Styling by Madeline McFarlane
Photography by Katherine Lu

Form follows force. The Anton series explores the structural weight of light through cast materials. Punctuated by the lamp, the internal lit face of the Anton holds light and reflects its surrounds.





Anton Gunmetal
Wowowa Architects
Keano Warehouse
Styling by Ruth Welsby
Photography by Martina Gemmola



Anton Gunmetal
Daytrip Studio
Sister Studios
Photography by Mariell Lind Hansen



Anton Micro Ceramic Clear Glaze
Carole Whiting
Britomart Apartment
Photography by Jackie Meiring



Anton Gunmetal
Matt Woods
Percy Plunkett
Photography by Dave Wheeler



Anton Ceramic Brown
Studio Esteta
Via Porta
Photography by Sean Fennessy



Anton Mini Ceramic Clear Glaze
Kennedy Nolan
Caroline House
Photography by Derek Swalwell



Anton Ceramic (Clear Glaze)
Hecker Guthrie
Piccolina St Kilda
Photography by Shannon McGrath



Longton Gunmetal
LeLièvre Paris
Styling by Emilie Paralitici
Photography by Morgane Le Gall



Longton Gunmetal
KPDO
One Wellington
Photography by Anson Smart

The U Chain series hangs with gravity and a sense of equilibrium, appearing lightly balanced on a fixed anchor point.





Only U Large
Nina Maya
The Oscar
Photography by Felix Forest

Hard materials create a soft presence in the Discus series. Balancing platforms of hand-honed stone rest on lengths of brass.





Wall Discus
Simone Haag
Armada Residence
Photography by Mark Roper



Discus 5 & Wall Discus
Denfair 2017
Photography by Haydn Cattach

Step & Kick series combines structural lines and refined materials with implicit gesture—the asymmetrical kick and the balancing step.





Side Kick
Moloney Architects
Daylesford House
Styling by Bea + Co
Photography by Ben Hosking



Triple Kick
Tom Robertson Architects
Red Hill Residence
Styling by Simone Haag
Photography by Sean Fennessy



Big Kick
Cassina Catalogue, 2019
Styling by Greta Cevenini
Photography by DePasquale+Maffini



Big Kick White Enamel
Lexus Design Pavillion 2018
Styling by The Big Group
Photography by Marcel Aucar



Wide Step
Living Edge Group
Heide Residence
Photography by SpaceCraft



Wall Step
Porter Paints
Styling by Heather Nette King
Photography by Mike Baker



Wall Step
George Livissianis
Chin Chin Sydney
Photography by Tom Ferguson



Sole Step
Living Edge Group
Heide Residence
Photography by SpaceCraft



Sole Step
Lexus Design Pavillion 2018
Styling by The Big Group
Photography by Marcel Aucar

2–12 St Phillip Street
Brunswick East
Melbourne, Victoria 3057
Australia

Phone: +61 3 9387 1803

Sales and General Enquiries:
info@volkerhaug.com

Press and Media Enquiries:
press@volkerhaug.com

volkerhaug.com

NH